



GAT MONTHLY MEMBERSHIP PROGRESS REPORT

Results as of: 6/30/2023

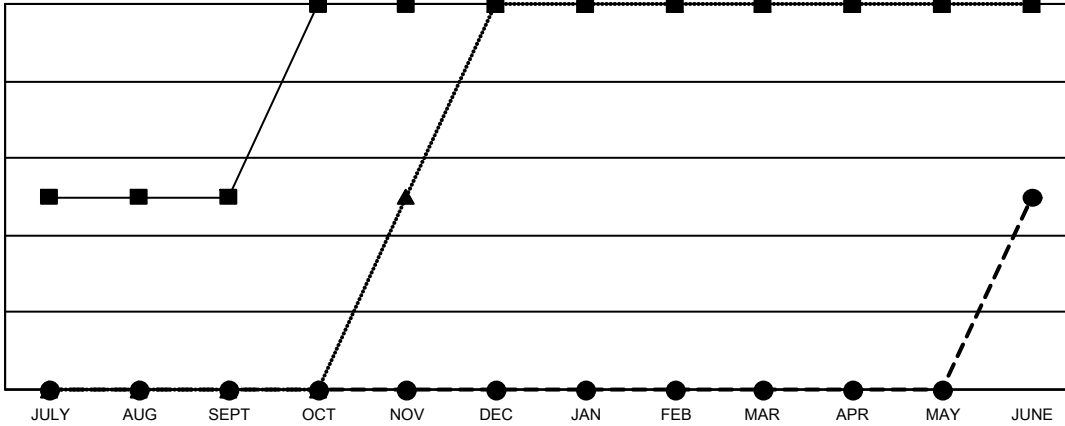
Multiple District 49

LOCATION: ALASKA

Clubs			
RESULTS FOR 2022-2023			
QUARTER	NEW CLUB GOAL	NEW CLUBS	DROPPED CLUBS
JULY/AUG/SEPT	1	0	0
OCT/NOV/DEC	1	0	0
JAN/FEB/MAR	0	0	0
APR/MAY/JUNE	0	1	2

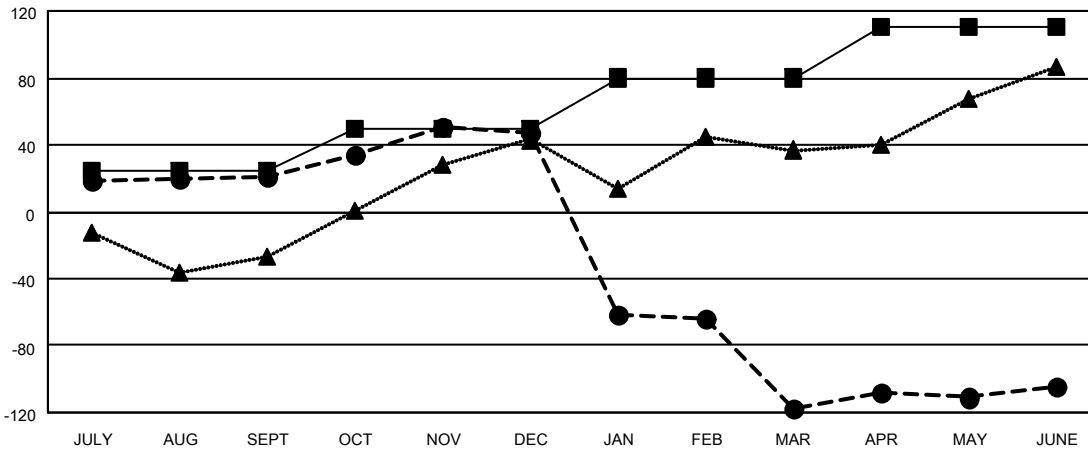
Members			
RESULTS FOR 2022-2023			
QUARTER	MEMBER GROWTH NET GOAL	MEMBER GROWTH ACTUAL	DROPPED MEMBERS ACTUAL (including transfers)
JULY/AUG/SEPT	25	60	33
OCT/NOV/DEC	25	58	30
JAN/FEB/MAR	30	94	252
APR/MAY/JUNE	30	220	173

GOALS AND ACTUAL NEW CLUBS CUMULATIVE



- - CURRENT YEAR GOALS FOR NEW CLUBS
- - CURRENT YEAR ACTUAL NEW CLUBS
- ▲ - LAST YEAR ACTUAL NEW CLUBS

GOALS AND ACTUAL MEMBERS CUMULATIVE



- - MEMBER GROWTH NET GOAL
- - MEMBER GROWTH ACTUAL
- ▲ - LAST YEAR MEMBERSHIP ACTUAL

DROPPED CLUBS: 2	43 CLUBS OF 61 ADDED 1 OR MORE NEW MEMBERS	GENDER DISTRIBUTION
DROPPED MEMBERS	CLICK HERE FOR CUMULATIVE MEMBERSHIP DATA	MALE 1,114 (58.20%)
DECEASED 21		FEMALE 795 (41.54%)
CLUB CANCELLED 45		NON BINARY 0 (0.00%)
OTHER 423		PREFER NOT TO ANSWER 5 (0.26%)
TOTAL 489		TOTAL FAMILY UNIT MEMBERS 416
		FAMILY MEMBERS PAYING HALF DUES 215